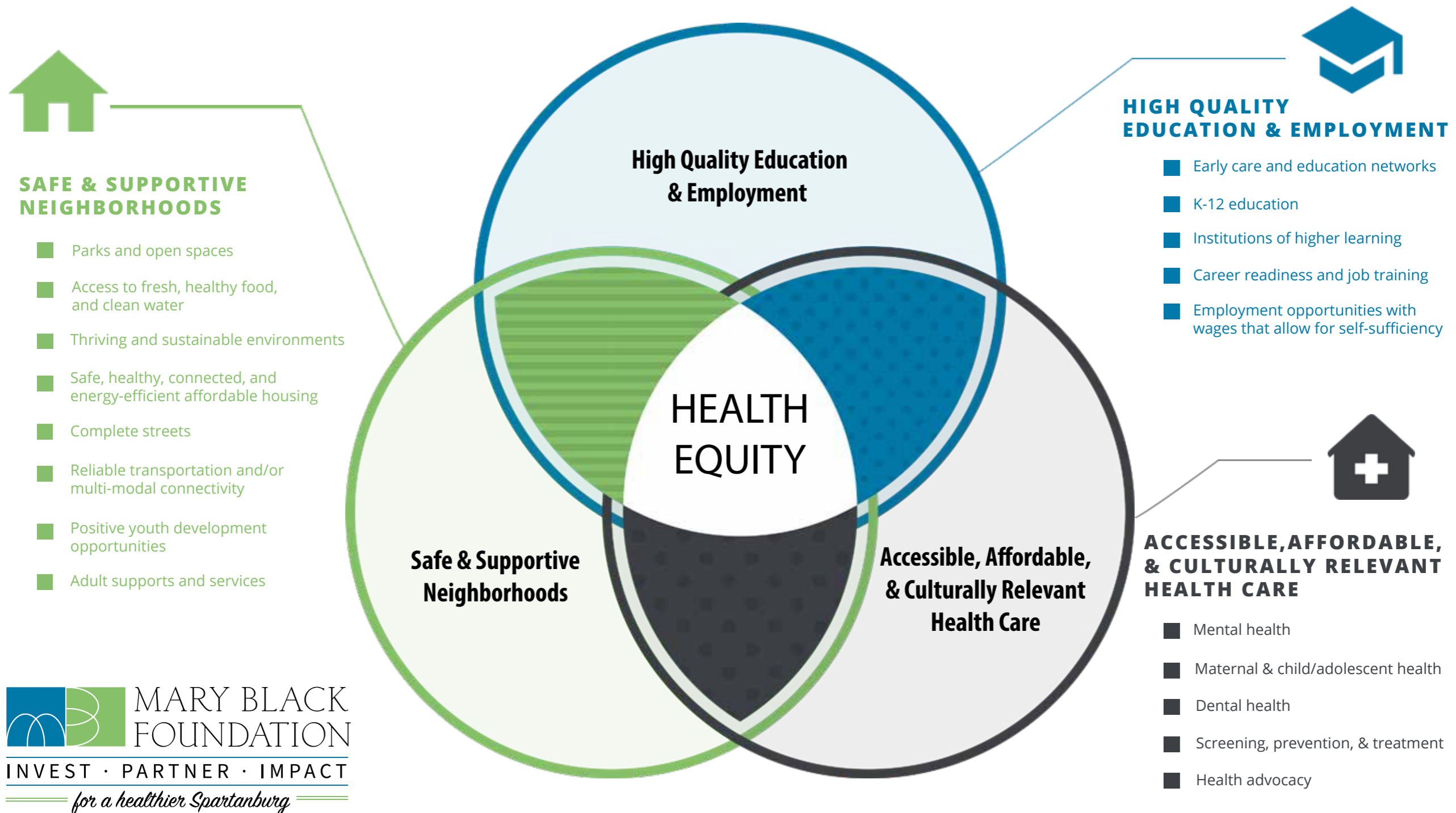


# HEALTH EQUITY FRAMEWORK

The Mary Black Foundation seeks to increase the wellbeing of children, families, and communities, especially those disproportionately experiencing inequitable negative outcomes. We recognize that individuals' ability to access opportunities is shaped by their social and community context. Inequities in access are often the result of centuries of unjust policies and structural discrimination. Health equity exists when all people have access to opportunities to thrive both physically and mentally, and no one is limited in achieving health and wellness because of their race, ethnicity, nationality, gender, ability, sexual orientation, age, income or zip code.

To advance health equity, Spartanburg will need to ensure it has:

**(1) high quality education & employment, (2) safe and supportive neighborhoods, and (3) accessible, affordable, & culturally relevant health care.**



# HEALTH EQUITY FRAMEWORK IN ACTION

## Examples of Past Work of the Mary Black Foundation

While no one organization can achieve health equity alone, the Mary Black Foundation uses its resources to advance health equity.

Resources include: **grants and impact investments, advocacy, capacity building, technical assistance, convening, and strategic alliances.**

Below are some examples of how the Mary Black Foundation has been working to achieve health equity.

